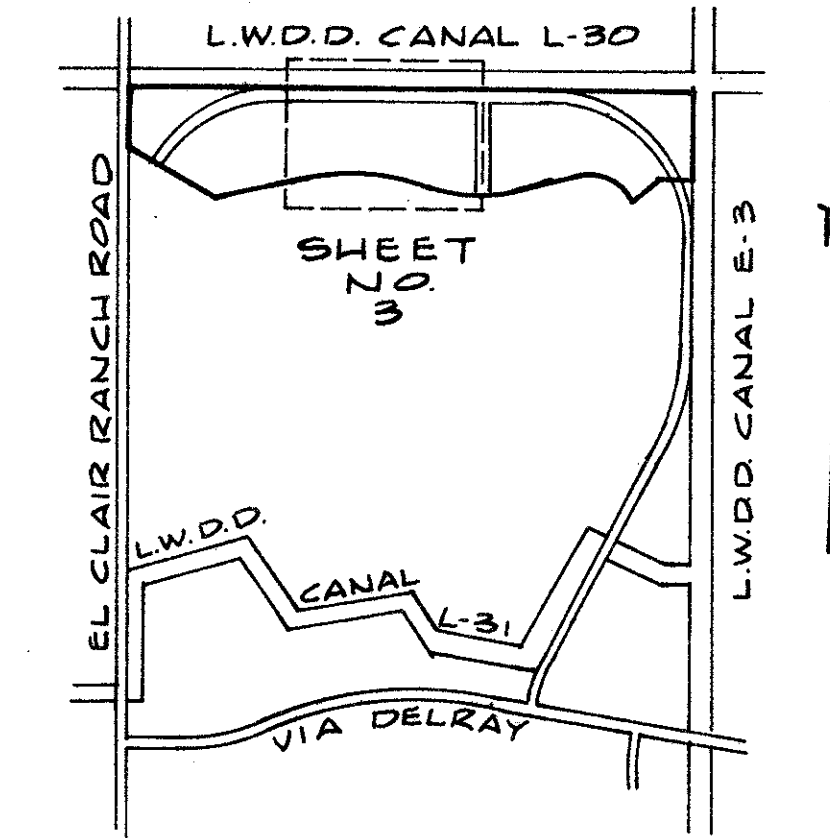
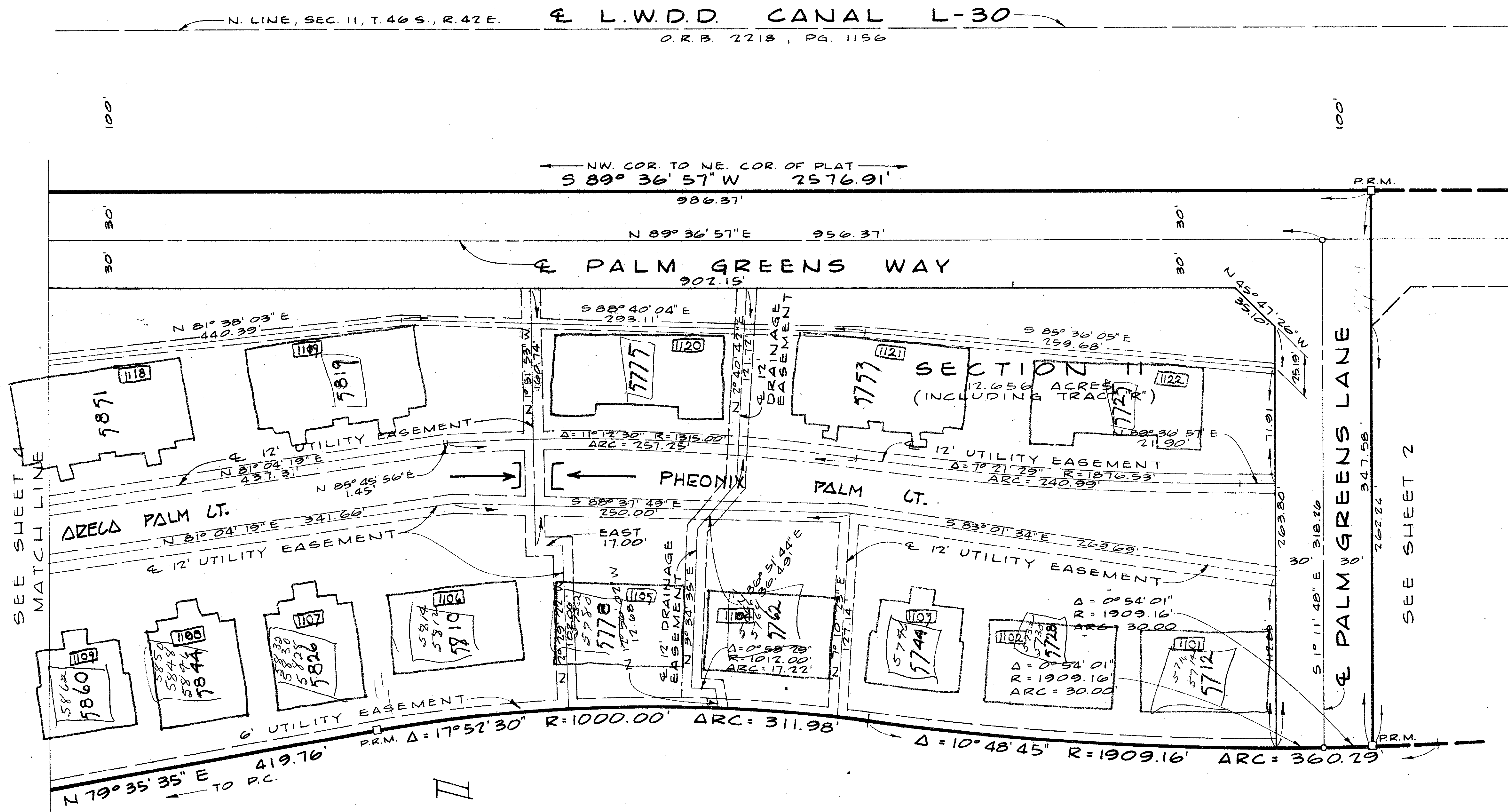


A PLANNED UNIT DEVELOPMENT  
**VILADELWAY - SECTION IO AND II**  
 PALM BEACH COUNTY, FLORIDA  
 IN 4 SHEETS - SHEET NO. 3



KEY MAP  
 NOT TO SCALE

21



SEE SHEET 4  
 MATCH LINE

SEE SHEET 2

II

NOT PLATTED

0324-005

36

VILADELWAY TO

MERIDIAN OF VILADELWAY  
 BEARS S 41° 13' 17.4" AND ITS



Field Book No. Pg.	ROBERT E. OWEN & ASSOCIATES, INC. ENGINEERS · PLANNERS · SURVEYORS WEST PALM BEACH FLORIDA	A PLANNED UNIT DEVELOPMENT <b>VILADELWAY</b> SECTION IO AND II PALM BEACH COUNTY, FLORIDA IN 4 SHEETS - SHEET NO. 3	78-1041 Scale 1" = 40' Date SEPT., 1978 Sheet 3 of 4 File No. BF-2277
--------------------	---	---	--